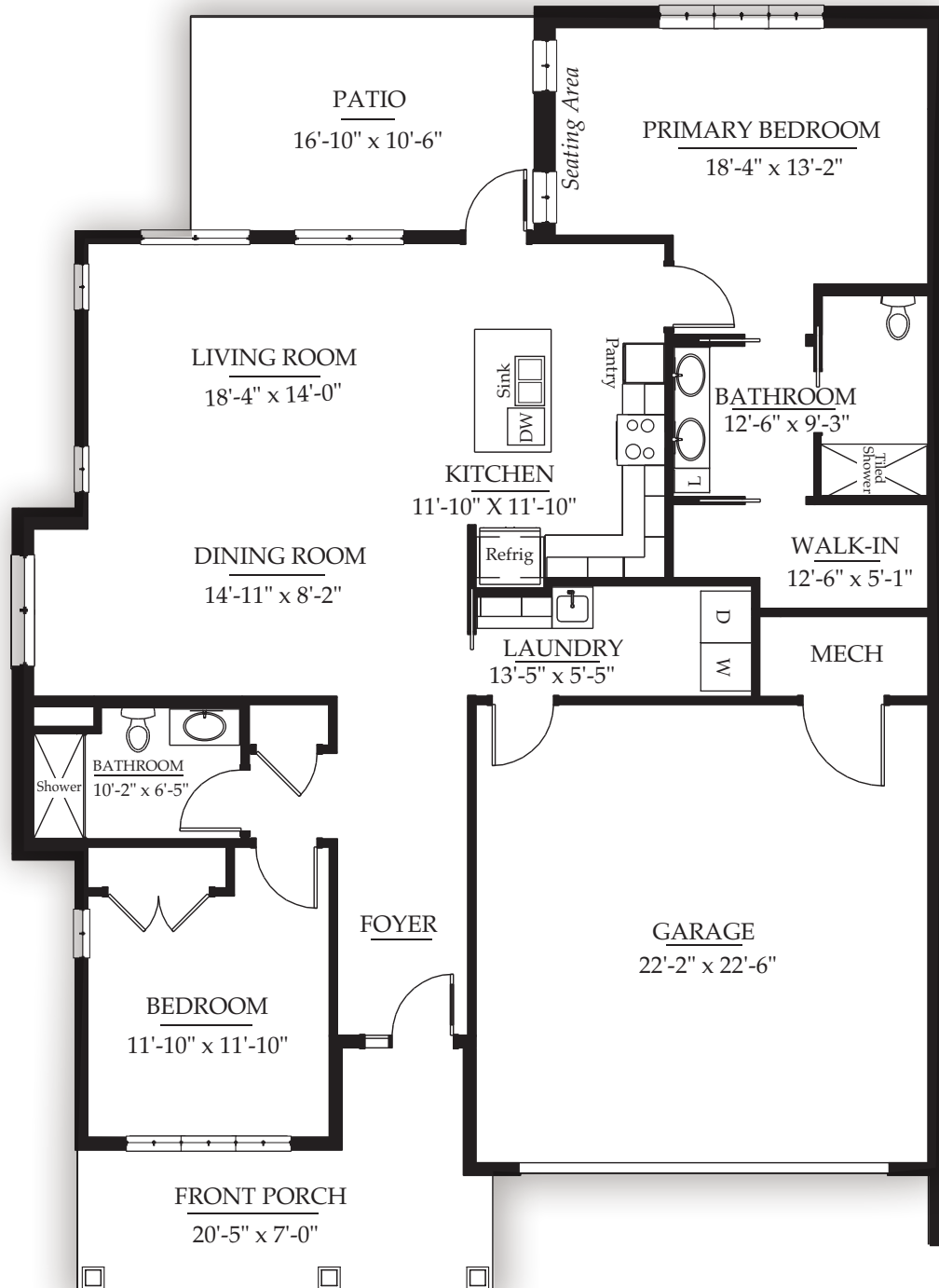




CROSS KEYS VILLAGE

The Brethren Home Community

KENT SHISLER
2 BEDROOM, 2 BATH,
2 CAR GARAGE



Bridgewater

2990 Carlisle Pike
New Oxford, PA 17350

717-624-5350 www.crosskeysvillage.org

Square footage is approximate. Details may vary.

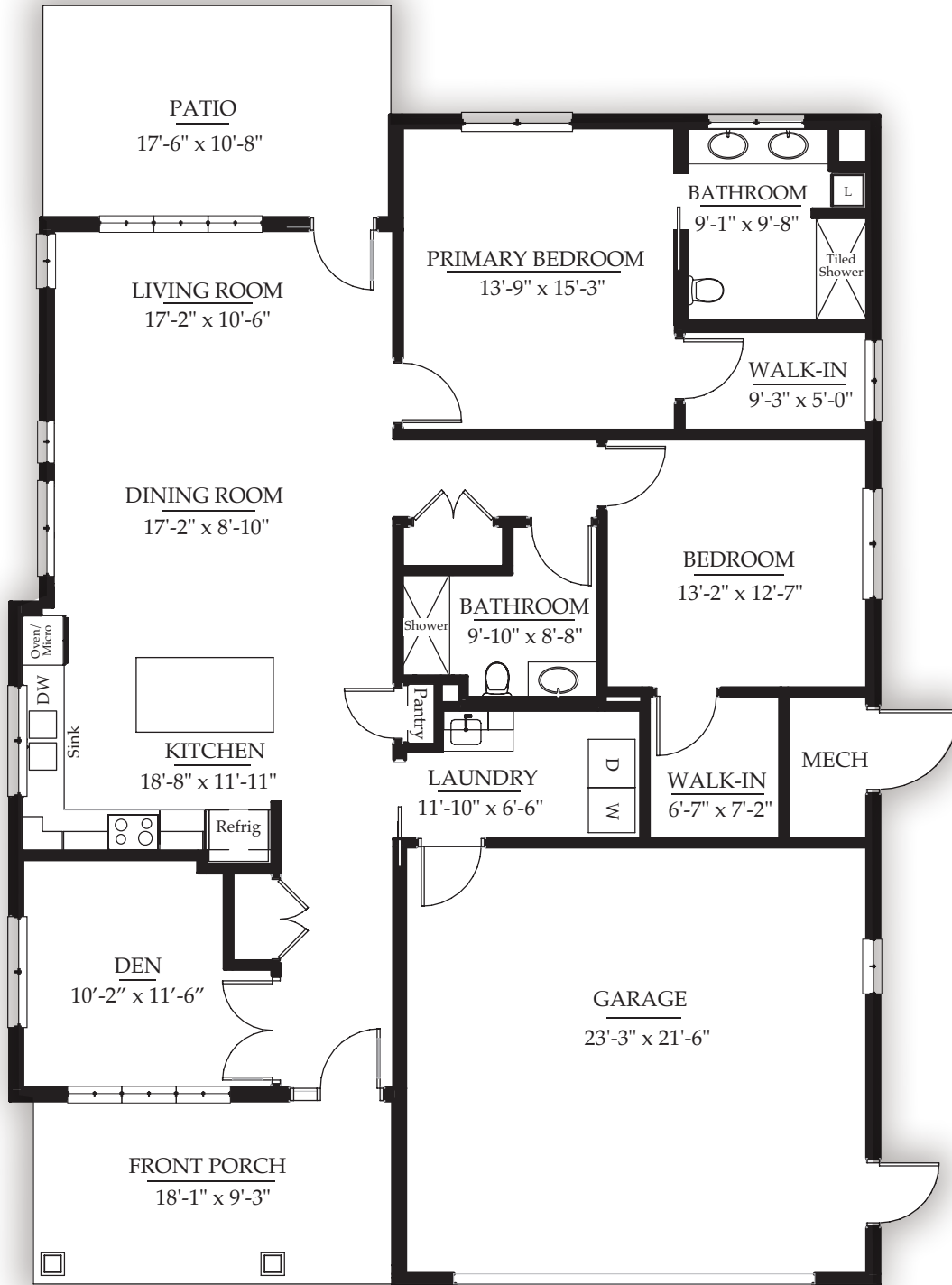




CROSS KEYS VILLAGE

The Brethren Home Community

ESTHER PENTZ
2 BEDROOM, 2 BATH, DEN,
2 CAR GARAGE



Bridgewater

2990 Carlisle Pike
New Oxford, PA 17350

717-624-5350 www.crosskeysvillage.org

Square footage is approximate. Details may vary.

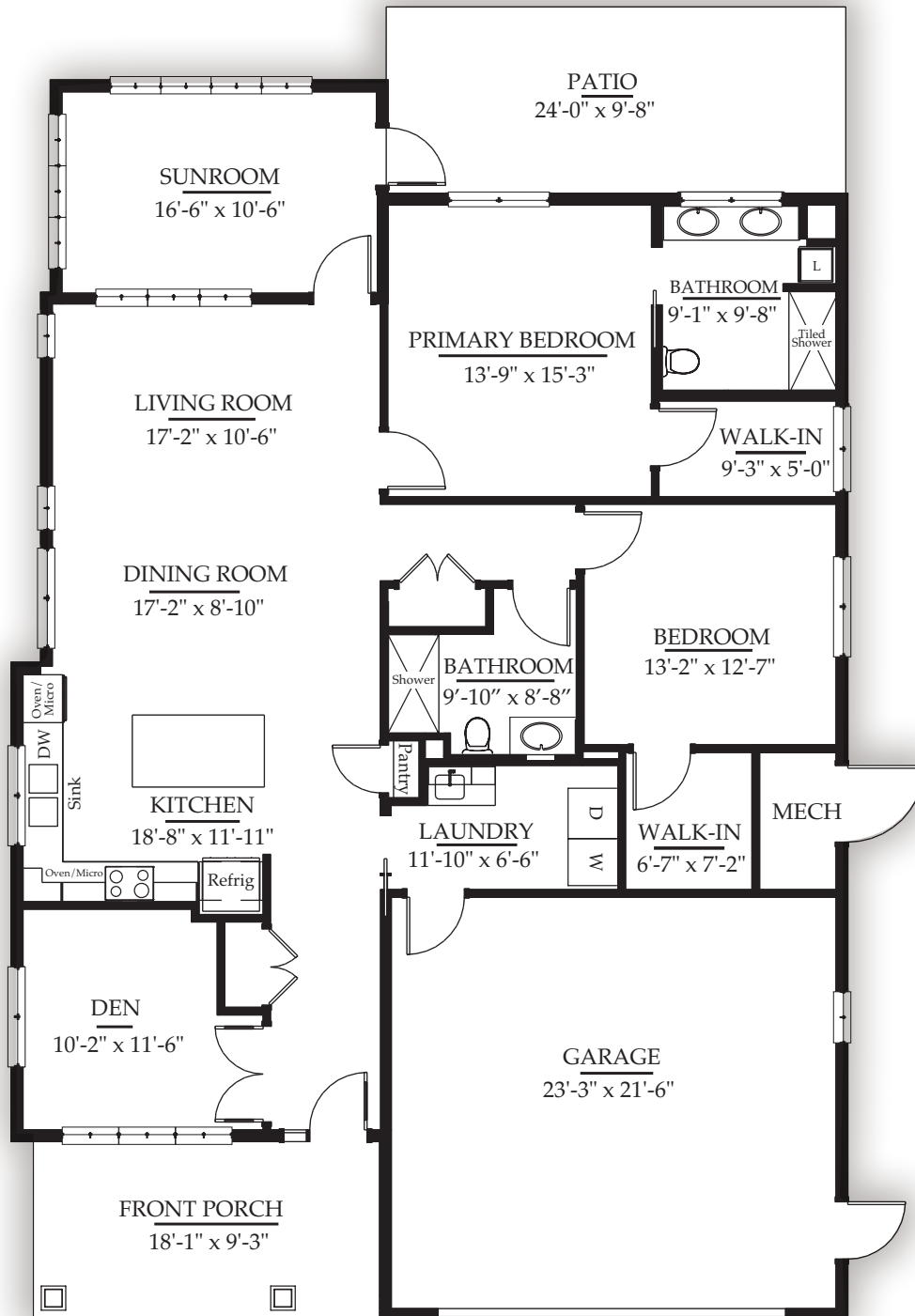




CROSS KEYS VILLAGE

The Brethren Home Community

ESTHER PENTZ DELUXE
2 BEDROOM, 2 BATH, DEN,
SUNROOM, 2 CAR GARAGE



Bridgewater

2990 Carlisle Pike
New Oxford, PA 17350

717-624-5350 www.crosskeysvillage.org

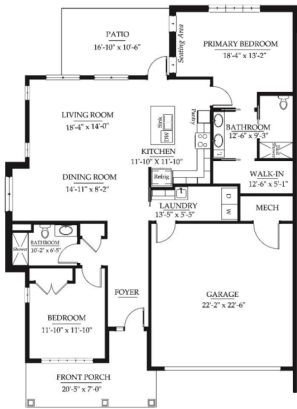
Square footage is approximate. Details may vary.





Bridgewater Landing

PRICES EFFECTIVE JULY 1, 2024



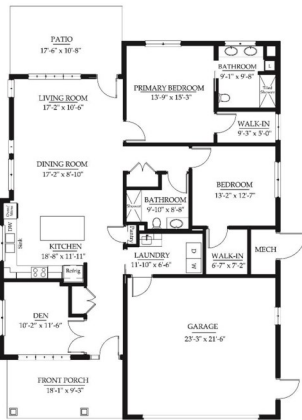
Kent Shisler (duplex)

Two bedrooms - Two full baths - Two-car garage

1,603 square feet - Entrance fee: \$402,000

Monthly fee: \$1,623 (single occupancy) \$1,773 (double)

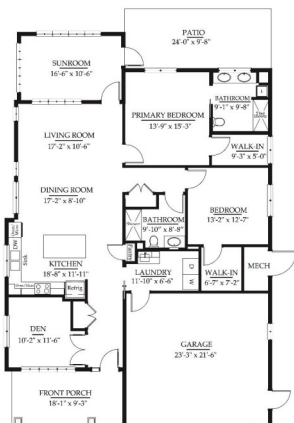
The monthly fee above is subject to yearly increases at the turn of our fiscal year beginning in July 2026.



Esther Pentz (single)

Two bedrooms - Two full baths - Two-car garage

1,691 square feet - Entrance fee: \$424,100



Esther Pentz Deluxe (single)

Two bedrooms - Two full baths - Sunroom - Two-car garage

1,881 square feet - Entrance fee: \$461,400

Monthly fee: \$2,028 (single occupancy) \$2,178 (double)

The monthly fee above is subject to yearly increases at the turn of our fiscal year beginning in July 2026.